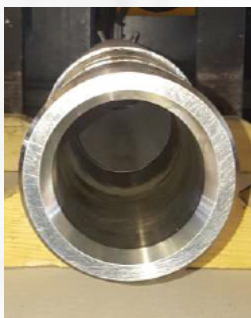
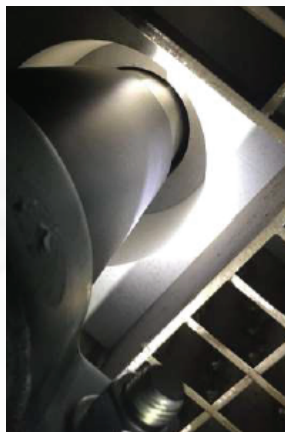


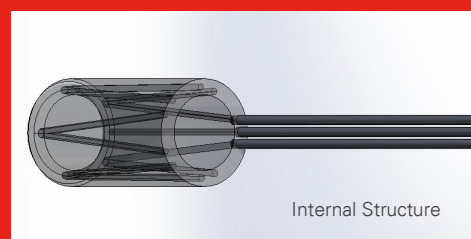
Supreme 'V' Electrode Holder

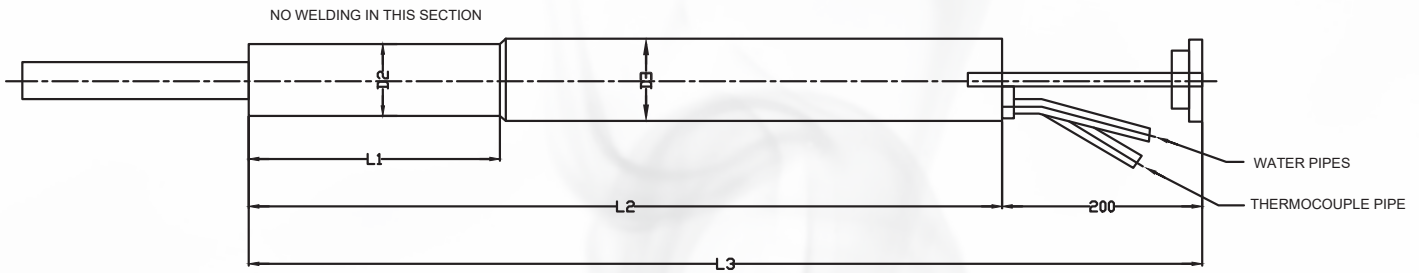
- Robust no weld design
- No weld in hot spot, extended life time
- High cooling capacity
- Variable cooling range
- Increased Efficiency
- Improved cooling distribution
- Easy to replace and low maintenance
- Electrode block drawings and engineering
- Unlimited pushing of Electrodes with reduced risk of water leak



Hotwork-XiX has designed these electric holders with efficiency at its core, while maintaining the rugged durability of existing holder ranges.

The high flexibility of the electrode holder meets the varying needs of the glass contact refractories during their lifetime. Cooling would be varied to preserve refractories during the aging process.





MOLYBDENUM Ø D1	NOSE Ø D2 (mm)	SLEEVE Ø D3 (mm)	NOSE LENGTH L1 (mm)	BODY LENGTH L2 (mm)	EXT LENGTH LT (mm)	TOTAL LENGTH L3 (mm)
31.75(1-1/4")	63.5	73	222.25	900(560*)	200	1100(760*)
76.2(3")	114.3	127	222.25	900	200	1100
50.8 (2")	88.9	96.8	230	900(560*)	200	1100(760*)
63.5 (2.5")	105	114.3	230	900(560*)	200	1100(760*)

- Each suitable for use with Molybdenum electrodes. Each holder has a type 'K' mineral insulated thermocouple fitted to allow monitoring of the holder hot face temperature. Holder length with various dimensions available on request.

- Water cooled nose manufactured from solid high temperature resistant alloy. Waterways precision drilled into nose ensuring NO WELDS at the front of the holder, thus ensuring good cooling close to glass, ensuring good seal.

- NO WELDS on HOT Face allows to advance electrodes as often as required without risking damage to the holder and thus reducing expensive hot repairs over time.

- Includes "K" type mineral insulated thermocouple fitted to allow monitoring of the holders hot face temperature;

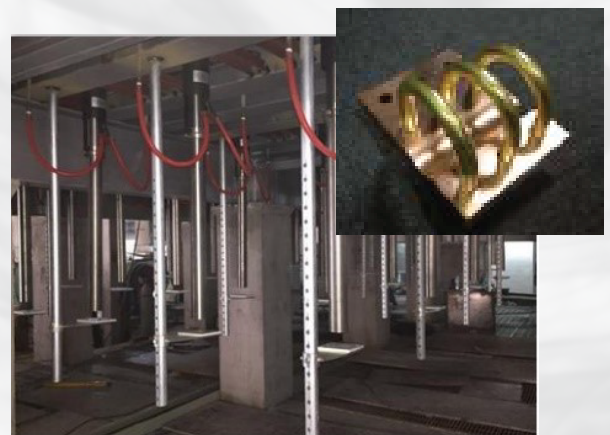
- Molybdenum fixation ring

Accessories available:

- Supply sufficient qualities of high temperature connection hose (designed for hot 300°C and pressure 200psi), hose clips (must be stainless steel, thickness 1mm), brass body needle valves and water flow switches. Also includes fixing device, isolator, flexible cable, flexible hose, ball cock/sensor.

- Cable cooper clamps which fix to the molybdenum electrode and facilities power and ground cable terminations

- Fixing holder, adjustable in height with plate to protect the electrodes from slipping



Swiss Quality and German Reliability... complete engineering and supply



Hotwork International AG
 Romanshornerstrasse 123
 9322 Egnach
 Switzerland
 Tel.: +41 71 649 2090
 contact@hotwork.ag
 http://www.hotwork.ag

Hotwork International Inc.
 Cebu, Philippines
 Tel.: +63 32 341 3826

Heat Up Latin America
 Cuernavaca, Mexico
 Tel.: +521 777 2676666

Hotwork - XIX
 Shanghai, China
 Tel.: +86 18601793322

Hotwork Thailand
 Samutprakarn, Thailand
 Tel.: +66 2 336117

Hotwork Indonesia Pt.
 Jakarta, Indonesia
 Tel.: +62 899 9210 605

Hotwork Japan
 Takasago-Shi, Hyogo